

6

5

4

3

2

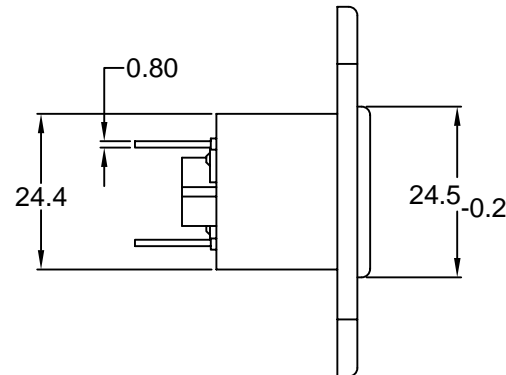
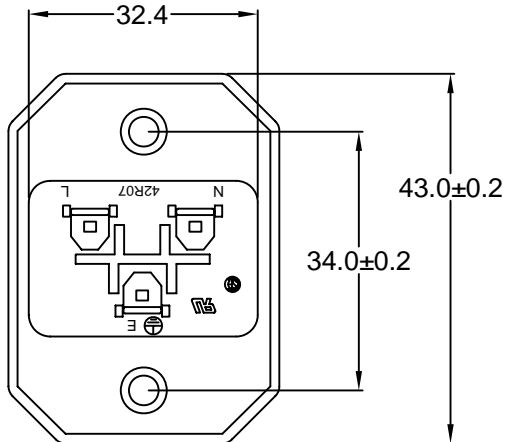
1

MATERIAL AND FINISH:

Insulator: Polycarbonate, UL-94V-0 rated  
Contacts: Brass, Nickel plated

ELECTRICAL SPECIFICATIONS:

Current rating: 16 A  
Voltage rating: 250 VAC  
Current rating: 20 A  
Voltage rating: 250 VAC  
Insulation resistance: 100 Mohm min. at 500 VDC  
Dielectric withstanding voltage: 2000 VAC for one minute



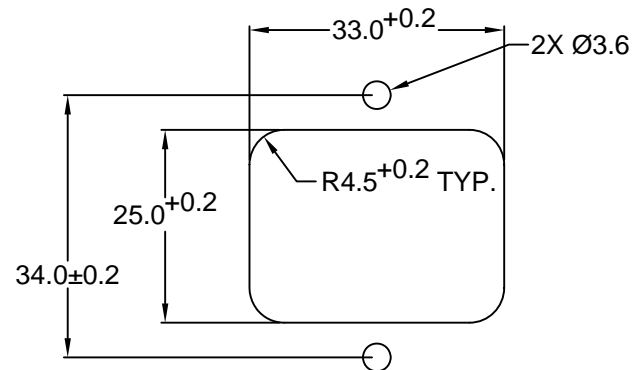
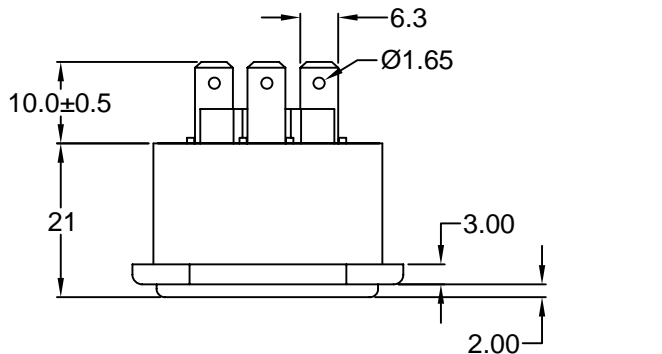
ORDERING CODE:

42R07-2 2  
1 2

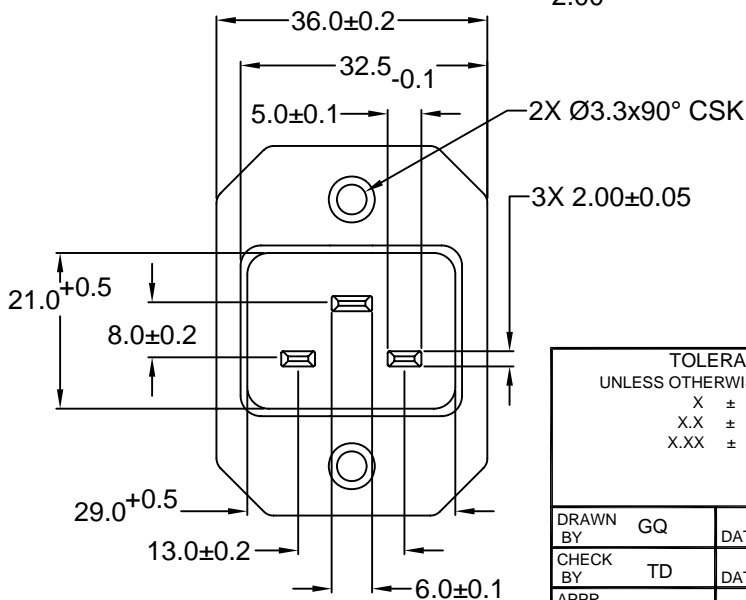
- 1) COLOR  
1 = BLACK  
2 = GRAY

2) ELECTRICAL CIRCUIT CONFIGURATION

- 1 = 20A 250V 70°C 2+GROUND
- 2 = 20A 250V 155°C 2+GROUND
- 4 = 20A 250V 70°C 2 POLE



RECOMMENDED PANEL CUTOUT



RoHS COMPLIANT

TOLERANCE UNLESS OTHERWISE SPECIFIED  
X ± 1  
X.X ± 0.4  
X.XX ± 0.20

Power Dynamics, Inc.

Phone: 973 560-0019 Whippany, New Jersey Fax: 973 560-0076

PART: 16/20A IEC 60320 APPL. INLET; QC  
TERMINALS; CROSS FLANGE PANEL MOUNT

Table with columns for DRAWN BY (GQ), CHECK BY (TD), APPR BY (PB), DATE (08/24/01, 08/29/01, 08/29/01)

Table with columns for PART # (42R07-2X2X), SHEET (1 of 1), SCALE (NTS), and REV.

REVISIONS table with columns for REV, DATE, CHANGE, CHNG, CHECK, APPR

6

5

4

3

2

1