

6

5

4

3

2

1

**MATERIAL AND FINISH:**

Insulator: Nylon 66, color black, UL-94V-2

Contacts: Copper Alloy, Tin plated

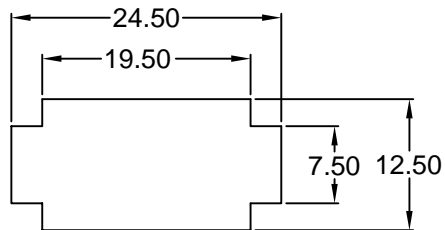
**ELECTRICAL SPECIFICATIONS:**

Rated current: 2.5A

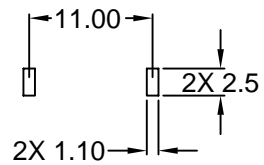
Rated voltage: 250VAC   

Insulation resistance: 100 Mohm min. @ 500VDC

Dielectric withstanding voltage: 2000VAC for one minute

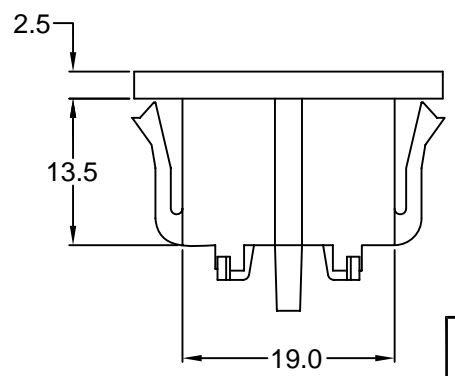
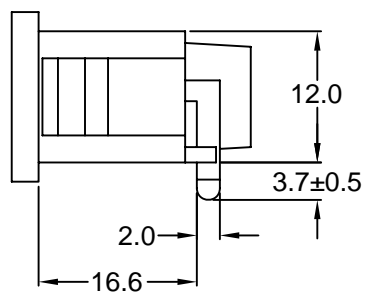
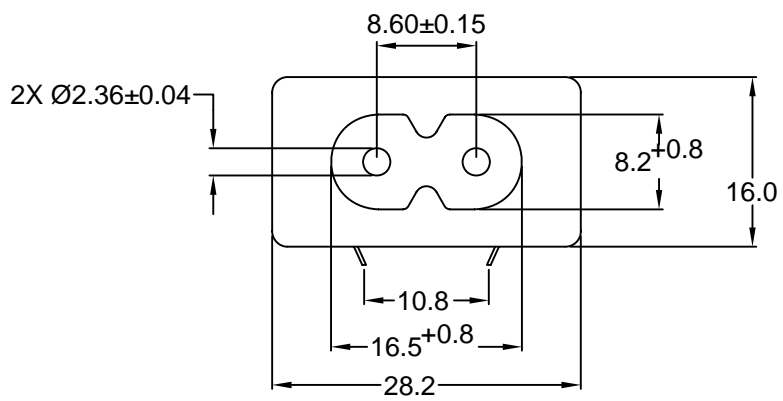


**RECOMMENDED  
PANEL CUTOUT**  
PANEL THICKNESS: 0.8 mm MIN.  
TO 1.3 mm MAX.



**RECOMMENDED  
PCB LAYOUT (TOP VIEW)**

**RoHS  
COMPLIANT**



REVISIONS	CHANGE	CHNG	CHK	APPR
	REVISED / UPDATED	GO	TD	PB
	DATE			
REV	DATE			
A	11/12/01			

TOLERANCE UNLESS OTHERWISE SPECIFIED	
X	± 1
X.X	± 0.4
X.XX	± 0.20

DRAWN BY	DT	DATE:	5/10/00
CHECK BY	JJ	DATE:	5/11/00
APPR BY	SS	DATE:	5/11/00

**Power Dynamics, Inc.**  
Phone: 973 560-0019 Whippany, New Jersey Fax: 973 560-0076

PART: MINIATURE IEC 60320 C8 APPL. INLET;  
SNAP-IN, PCB MOUNT

PART #: <b>42R51-5124</b>		SHEET
SIZE: A	SCALE: NTS	1 of 1
ALL DIMENSIONS FOR REFERENCE ONLY DIMENSIONS ARE IN MILLIMETERS		REV: A